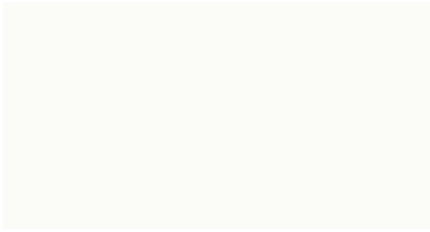


Unbelievable deepness

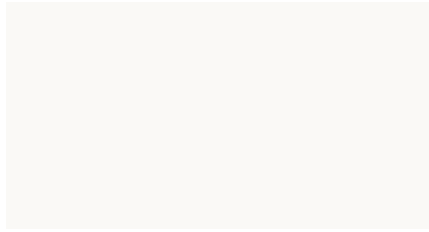
WILSONART® SOLID SURFACE



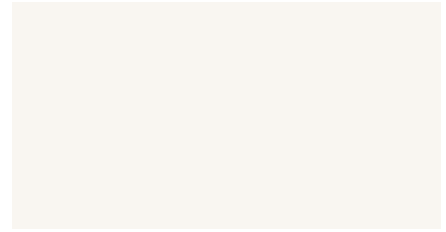
SSV (3 mm) and Gibraltar (12,5 mm)



F1-8699-SL Recycled White



D 354-SL Designer White

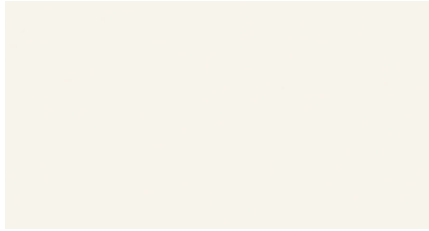


1573-SL Frosty White

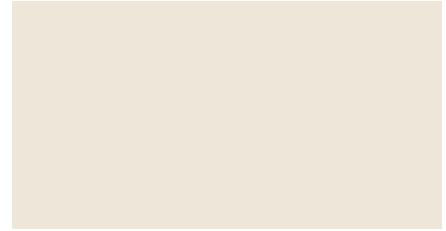
A



F1-7555-MG Icecap



F1-8106-SL Ivory



F1-8010-SL Bone

B



F1-9065-MG Artica



F1-7551-MG Ginger



D 92-SL Dove Grey

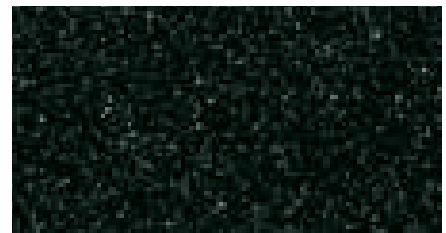
C



F1-7556-MG Shark Skin

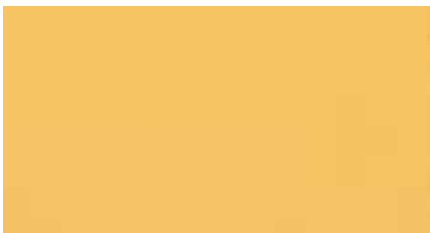


F1-7830-SP Bronze



F1-7820-SP Star Shine

D



F1-7554-MG Canary



F1-7552-MG Tango



F1-7553-MG Jungle

E

Gibraltar Glass (12,5 mm)



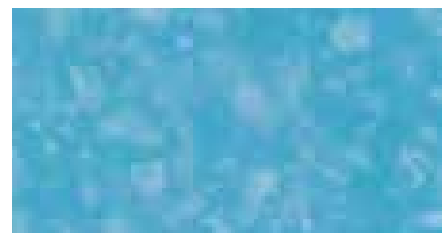
K3-8480-GL Frosted Glass

1



K3-8455-GL Antique Glass

2



K3-8465-GL Sky Glass

3

F



WILSONART® SOLID SURFACE

Unbelievable deepness

*Processing standards, versions worktops,
rinsing, wash boards and washbasins*



WILSONART® Solid Surface has many sensual dimensions. This makes it so valuable and demanding. Technically WILSONART® Solid Surface is a solid, fully colored, acrylic bonded material with mineral filler (Gibraltar Glass: polyester bonded material. Please pay attention to special processing guidelines.). A material with outstanding properties in use and in processing. It is resistant to the chemicals customary in the household and thus insensitive to spots, porelessly smooth and therefore hygienic, suitable for foodstuffs and easy to care for. Waterproof and water-repellant on one side and heat resistant on the other. As a thermoplastic WILSONART® Solid Surface can be formed three dimensionally under the action of heat. The material in the form of sheets can be processed similarly to wooden materials and bonded without joints and watertight with an acrylic adhesive* of the same material. Damages can be removed without trace. The surface can be formed in any way – from matt to high gloss polished. If highly stressed it can thus be renewed quite simply. The thermoplastic WILSONART® Solid Surface is an ideal supplement to the duroplastic RESOPAL® and is an ideal material for the kitchen, bathroom and the esthetically as well as technically high-quality interior design, for counters, bars and tables, for laboratories and

hospitals. The WILSONART® Solid Surface is suitable where elegant or functionally demanding surfaces are needed. The solid surface is available in two material thicknesses: Gibraltar as a solid 12.5 mm panel in size 3660 mm x 760 mm and SSV (Solid Surfacing Veneer) as a 3 mm surface in several sizes suitable for cutting with smooth, matt ground top surface and sanded back side suitable for gluing or already pre-finished on a substrate. The mineral filler is a natural product. Light color differences are signs of nature.

Everything from a single source: Resopal offers you an integrated product system in WILSONART® Solid Surface with worktops, sinks, vanity tables and wash basins. Product specifications and sizes from WILSONART® Solid Surface page 200, versions worktops, rinsing, wash boards and washbasins at www.resopal.de.

*) Exception Gibraltar Glass